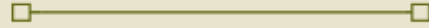




# SERRANO CREEK RANCH EQUESTRIAN CENTER



25200 Trabuco Rd, Lake Forest, Ca 92630  
serranocreekranch@msn.com  
(949) 768-5921



We (SCR Staff) want to thank all the boarders that donated to the Workers' Holiday Fundraiser, it was nice to read all the caring and warmhearted messages on the Holiday cards. We would also like to thank Jan, Lois, Shannon, and Melissa for taking the time to organize, bake the cookies, and set up the fundraiser. We are truly grateful to have such loving and caring boarders, at SCR.

## Rain Update

California again is breaking records with all the rainfall we have received. If we compare the actual SCR rainfall versus historical, then for the last three months, SCR has exceeded average amounts by these percentages:

* November	171%
* December	120%
* January	196%
* July 22 -January 23	144%

We are proud to report that the infiltration trenches have collected a significant amount of water that otherwise would have flowed into the creek. For example, the typical trench collected more than 500 gallons when



(Continued on page 2)

## JANUARY 2023 NEWSLETTER

### IN THIS EDITION:

- Thank You!
- Rain Update
- Zen and Art of Stall Maintenance
- Reminders
- Tack Swap Meet
- Thank You! (Toys for Tot)

counting the rainfall just from this past weekend alone. How much rain is that? Try dumping 17 full -size trash cans of water in your stall and see what happens - LOL.

If we look at the amount of rain from July 1 onwards, a typical trench has retained almost 2,000 gallons of runoff that otherwise would have entered the creek. As a whole, the currently installed trenches have retained and infiltrated more than 102,000 gallons of stormwater runoff from entering the creek. All our efforts over the past three years are going far in moving the stable towards stormwater compliance. And compliance means that we can remain open for years to come.

The other great news is that after Monday's rain, we are looking for sunny days through the 30th (this is far as the Weather Channel forecasts.) SCR staff will be working diligently to return the stable to its normal state by leveling roads, raking stalls, etc..

## Zen and the Art of Stall Maintenance



To understand what the best winterization strategy is, always remember the single most important rule:

*It's better to shed water than to soak it up.*

Again, this is absolutely the rule to follow. Now let's explore the wonders of winterization in depth!

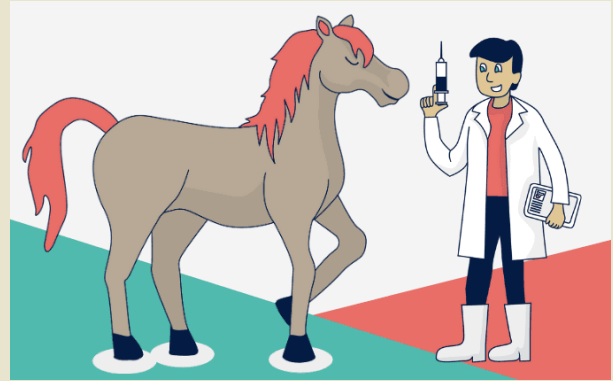
### Maintain Slope

Every pipe stall is built in such a way that it has a minimum 2% slope towards the infiltration trench. How much is 2%? It's 6" of fall over 24'. Typically, this means that from the gate under the shelter to

## SERRANO CREEK REMINDERS



### Vaccination Records



Please remember to forward your up-to date vaccine records to the office if you have not already, so that we can update your horse's vaccine information in our system. If you have a tendency of forgetting to forward them, just ask your vet to forward them for you to [serranocreekranch@msn.com](mailto:serranocreekranch@msn.com).

SCR requires the following vaccines:

#### Annual

- ⇒ Tetanus
- ⇒ West Nile
- ⇒ Eastern & Western Encephalitis

#### Semi-Annual

- ⇒ Influenza
- ⇒ Rhinopneumonitis
- ⇒ Worming or Annual Fecal Exam



the back, the height difference is 6". In a rainstorm, if the proper grade is maintained, rainfall will flow easily into the trench. Without survey equipment, how do you know what 2% is? That's easy; just follow the angle of the pipe rails which have been set at the proper angle.

### **Keep it Even**

The more even the surface, the faster the water will run to the trench. The faster the water leaves, the more time that any remaining moisture can evaporate between storms. Then, when the next storm comes, the footing is hard, dry, and smooth. Thus, the next storm's water quickly runs off. Life just gets better and better.

This cycle can also work in reverse. If a stall gets muddy, it will get worse because the surface is unable to be restored in between storms. First, the horse tromps in the footing creating deep depressions. Then the next storm comes along, and the depressions fill up, resulting in even more water being trapped. The footing is now muddier and consequently gets even deeper depressions. With each rain event, it all gets worse.

By taking a few minutes each day (and especially after a rain event) and raking your stall to fill in any hoof prints, you'll be developing a solid footing for the next storm. Remember that your horse's hooves are very heavy, and they will compact the soil in whatever shape it's left in. If raked even and smooth, you'll be improving the footing for the next rain as it compacts in a smooth surface. Not raking, and it will harden into a very uneven surface that will trap the water from the next storm. Uneven stalls take way longer to dry out.

When the footing is first placed, it contains many pockets of air. If there is sufficient time, your horse will compact the footing, and this will greatly reduce the amount of air pockets. Then when the rain comes, the majority of rain will flow off the surface and to the trenches. With each succeeding rainfall, the foot will continue to compact and get harder, and even more rain will run off to the infiltration trenches. Light raking will ensure that you are preparing for the next rain event. In a perfect world, the first few rain events are light, so the DG is damped and compacts better with no adverse effect on the footing.

Unfortunately, if a heavy rain event occurs just after the DG was placed, your stall is gone through a muddy phase. Raking is very important to ensure that it compacts even. Whether the rain is light or heavy, the goal is to get the footing to compact and in the long run, rainfall is the "cement" that compresses the DG and pushes out air pockets. As it compacts, less and less water will soak in, and more will flow away to the trenches.

*What do I do if for some inexplicable reason my stall turns into a mud pit?*

You may be tempted to dig out all that mud until you hit bedrock. That's all well and good until the next rain, when now your stall becomes the local swimming hole. If the stall footing is new, then easily rake until it compacts. The worst you can do is dig it out and replace with new materials which will be full of air pockets, and therefore restarting the compaction clock all over again. I have gone through the initial cycle, stop by the office for a personal consultation to see what's up.

### **Rakes**

What is a good rake to use in my stall? Home Depot or Lowes sell these inexpensive garden rakes that work pretty well. A few minutes raking footing material into low spots is all that's required. Some folks rotate the footing by removing some of the wet material and spreading it through the stall, and then raking dry material into the low spot. Again, the goal is to create an even surface that will dry and compact even. Not recommended is aggressive raking the stall like one would if you were loosening the surface to plant seeds.



If you want to become a stall master, then using a landscape rake will make you the envy of the stall row, if not the whole stable! These wider rakes (pictured here) which are twice as wide as the garden rake, really make a big difference. A second benefit is that with their daily use, you'll develop some real core strength.

## Shavings

Given the above, hopefully you'll see that putting shavings to soak up wet stalls is not advisable. Placing shavings in exposed areas acts as a mulch that prevents moisture from evaporating or running off. Shavings also degrade and this raises the bacteria level which leads to thrush. Lastly, shavings create small voids in the soil which also hold more water than if there no shavings. And yes, the emotional rush of dumping a few bags of shavings to make the stall smell and look pretty, ultimately will prevent the water from flowing or evaporating. Down the road this will create an even bigger problem. Shavings do play a role if they are kept under the shelter.

By encouraging your horse to remain under cover, your horse will make less trips outside. This means fewer hoof prints and thus less water retention. Here are a few thoughts on shavings:



**Mini- Shavings** :The mini shavings are our most popular and last longer than the Classic shavings. When cleaning the stall, the flakes sift easily, and this allows you to remove the waste. We would also recommend that they stay under the cover.



**Classic (Regular)- Shavings**: The classic (Regular) is a variety of flake size for comfort and absorption. However, they are not popular as the Mini shavings.



**Megazorb (Woody Pellets)**: The Megazorb are perfect for the problem urine spots, as they absorb the moisture and controls ammonia.

## **Tack Swap Meet / Boutique**

It's time to clean out our tack sheds and offer to sell or exchange our tack that you no longer use. It is also time to show off whatever interesting crafts or products you have to other boarders.

We would like to start this year with a Tack Swap Meet / Boutique. Our goal is to have at least one Tack Swap Meet/Boutique per year. It will be held in the picnic area in front of the stable. There will be limited space in the classroom as well. There is no charge for boarders, and you may bring your own table/chairs, etc. We will be announcing more information about the Tack Swap Meet/ Boutique date in February, so pay close attention to our emails. Please feel free to contact the office for information.



## **Professional Services Directory**



### **Leslie Thomson**

Western Lessons  
& Training  
(949) 295-4807

### **MKO Performance Horses**

Western & Barrel  
Training/ Lessons  
(949) 351-4706

### **Silver Iris Farm**

All-Around English & 3-Day  
Eventing  
(949)395-0932

### **Tom Betts-Aranda**

Dressage Lessons  
(949)291-8262

### **Brave Grace**

Equine Inspired Growth and Healing  
(949) 371-6240

### **New Flight Counseling**

Equine Assisted EMDR  
(949)793-9264

### **Simple Horses Sense**

Equine Assisted Counseling  
(714)468-2512



Hello SCR Boarders,

This year's Toys for Tots toy drive event was yet another achievement! It seems like each year it becomes better and better. We were overwhelmed by the graciousness of the SCR community and because of your generosity, we were able to fill the truck to the brim. Yes, to the brim! To all the people who donated, this helped bring a smile to a child's face this holiday season and we sincerely thank you for supporting our efforts in collecting toys for the Toys for Tots toy drive. May everyone have a magnificent 2023!

Love,

Leslie, Lauren, and Blaine

